

Great Lakes REACT Team #6068 Incident Report

Incident Date: 12 / 17 / 2011 Incident #

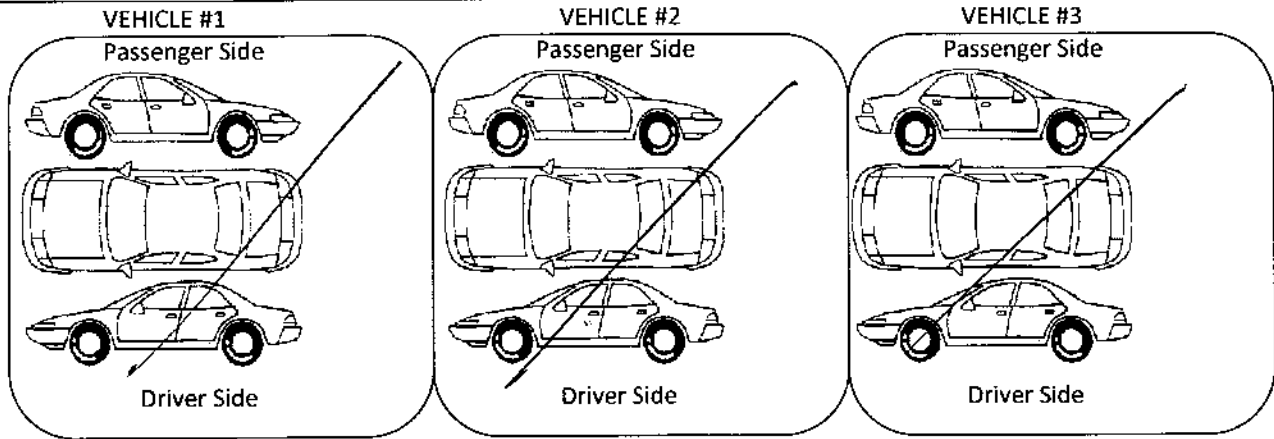
Call Source: N/A
 Reported Location: I 271N → I 480W RAMP
 Actual Location: SAA

Received	0950
Responding	—
On Scene	0950
Released	1050
In Service	1050

Description of Scene:
 MULTIPLE VEH STUCK / COMM 18WHL JACKKNIFE ON RAMP
 D/T BLACK ICE

REACT Units Responding: 305 o/s
 PD/FD/EMS Units: BEDFORD PD x1

	Veh Plate	State	Color	Make	Model	OCC x	Other
1	UNK ↓						
2							
3							



Narrative - Description of Services Provided by Great Lakes REACT
 COMM TR/TR RIG JACKKNIFE ON RAMP, BLACK ICE, BRIDGE/RAMP
 IMPASSIBLE - BLOCKED RAMP C APPROVAL OF BED HTS PD. VIA 911
 DISPATCH - AWAIT ODOT FOR SAFTS.

Reporting Unit #: 305 Signature: John Podley